

4.2mm WTB (V4.2) Series Connector:



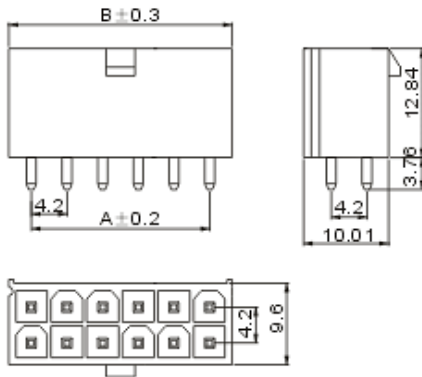
SPECIFICATIONS

Pitch: 4.2 mm
 Useable Wire Range: AWG 24# ~ 18#
 Current Rating: 7A, AC, DC
 Voltage Rating: 250V, AC, DC
 Operating Temperature: -25°C ~ +85°C
 Relative Humidity: 93%, +40°C
 Dielectric Withstanding: 1500V AC/minute
 Contact Resistance: ≤ 10 mΩ/Contact
 Insulator Resistance: ≥ 1000 MΩ at 100V

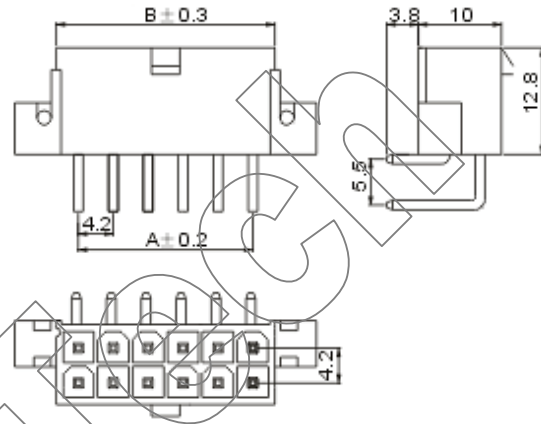
Material:
 Base: Nylon66/ Nylon6T, UL94V-0
 Contact Pin: Brass
 Housing: Nylon66, UL94V-0
 Terminal: Phosphor Bronze

ROHS Compliance

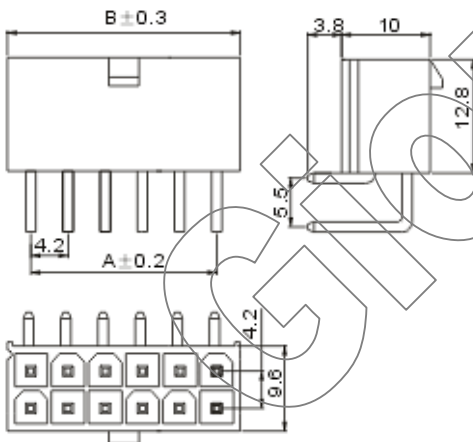
V4.2-XA



V4.2-XAWS



V4.2-XAW



Circuit	Part No.			Dimensions (mm)	
				A	B
2	V4.2-2A	V4.2-2AW	V4.2-2AWS	/	5.60
4	V4.2-4A	V4.2-4AW	V4.2-4AWS	4.20	9.80
6	V4.2-6A	V4.2-6AW	V4.2-6AWS	8.40	14.00
8	V4.2-8A	V4.2-8AW	V4.2-8AWS	12.60	18.20
10	V4.2-10A	V4.2-10AW	V4.2-10AWS	16.80	22.40
12	V4.2-12A	V4.2-12AW	V4.2-12AWS	21.00	26.60
14	V4.2-14A	V4.2-14AW	V4.2-14AWS	25.20	30.80
16	V4.2-16A	V4.2-16AW	V4.2-16AWS	29.40	35.00
18	V4.2-18A	V4.2-18AW	V4.2-18AWS	33.60	39.20
20	V4.2-20A	V4.2-20AW	V4.2-20AWS	37.80	43.40
22	V4.2-22A	V4.2-22AW	V4.2-22AWS	42.00	47.60
24	V4.2-24A	V4.2-24AW	V4.2-24AWS	46.20	51.80